



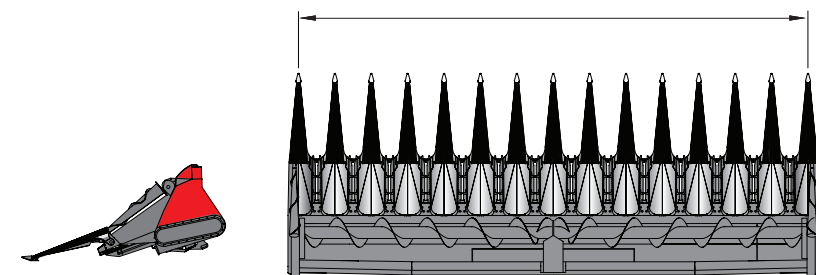
MDD-200

ROW INDEPENDENT CORN HEAD - SPECIFICATIONS

Admitted crops row-spacing:	Row Independent				
Row units quantity - 508 mm (20 in):	12	14	16	18	20
Working width:	6.096 m (20'ft)	7.112 m (23'ft)	8.127 m (27'ft)	9.144 m (30'ft)	10.160 m (33'ft)
# of rows which harvest					
380 mm (15 in):	16	18	21	24	26
508 mm (20 in):	12	14	16	18	20
760 mm (30 in):	8	9	10	12	13
910 mm (36 in):	6	7	8	10	11
Drive:	60° free rotation yoke pto drive. ASA 80 H oil bath roller chain.				
Gearboxes:	Oil bath.				
Row unit safety clutch:	One per row unit. Preloaded. Non adjustable.				
Stalk Rolls:					
Mounting:	Maintenance free bearing with self aligning ball joint at front end support.				
Blades:	Eighth -1/4" thick hardened- opposing serrated flippable blades bolted to the shaft.				
Snapping plates:	Hydraulically adjustable.				
Gathering chains:	Type:	CA2801. 66 pitches.			
Conveying lugs quantity:	11				
Auger:	Drive:	Dual independent drive and central support.			
Speed:	140 rpm.				
Mounting:	Hex shaft on spherical bearings. Adjustable.				
Safety clutch:	One clutch each drive. Preloaded. Non adjustable.				
Snouts and shields:	Stainless steel made.				
Side augers:	Standard feature. Mechanical drive. Shear pin				
Weight :	2,650 kg (5840 lb)	3100 Kg (6834 lb)	3,600 kg (7940 lb)	3,960 kg (8730 lb)	4,365 kg (9625 lb)

Specifications and design subject to change without notice.

Working width:



DISTRIBUTOR / DEALER

HARVEST ANY DIRECTION, IN ANY ROW SPACING

3RD GENERATION ROW INDEPENDENT CORN HEAD



MAINERO



MDD-200

IRT ROW INDEPENDENT CORN HEAD

(Intermeshing Replaceable Teeth)

+54 (3537) 424 031
www.mainero.com

CARLOS MAINERO Y CIA. S.A.I.C.F.I.
Rivadavia 259 - (2550) Bell Ville
Córdoba - Argentina



MAINERO

www.mainero.com

www.mirruoro.com



HOW DOES IT WORK?

END FENDER AUGER:
Every MDD-200 comes standard with end fender augers to assist with pulling in leaning or downed stalks that tend to try to ride on the ends. A simple shear pin protects against damage from possible wrapping.



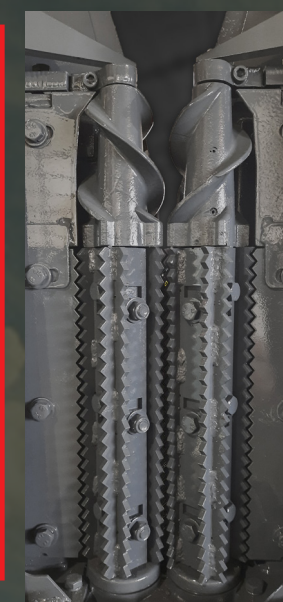
PIVOTING SNOOT TIPS:
The pivoting, spring loaded snout tips will pivot to the best angle reducing the possibility of snout damage. The pivoting snout tips allow you to have a lower row unit and snout working height or even run the header on the ground for a short time.



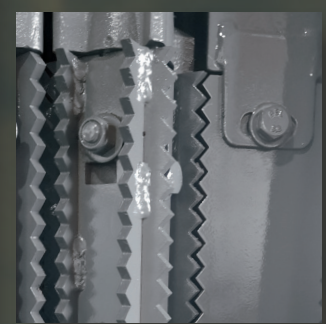
HEADSIGHT READY:
All snouts come Headsight auto height ready with pre drilled holes allowing for sensor wiring to be protected from the elements. (Headsight is an add on option)



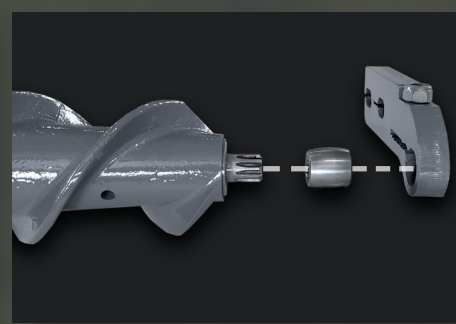
NEW IRT INTERMESHING REPLACEABLE TEETH - ROLLS:
Specifically designed to match U.S. farmers needs, the serrated blades create an aggressive crimping action while pulling the stalk down as it moves back through the rollers. As the stalk is pulled down it is crimped multiple times reducing the amount of trash or MOG going into the combine with no additional power consumption. This action also creates a much more aggressive result than standard knife rolls. The residue left in the field is ready for a better tillage result and quicker decomposition. These blades are reversible thus doubling their life and bolted on for easy replacement.



NEW INTERMESHING ROLLS SCRAPPERS:
Like the rollers, the scrapers are serrated as well. Having both the rolls and the scrapers serrated keeps material from wrapping in high moisture corn and other tough conditions. This also contributes to lower power consumption.



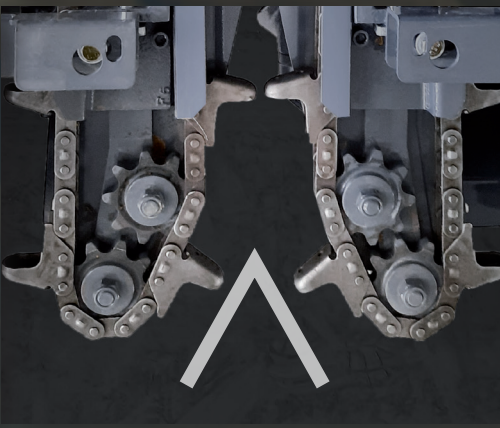
NEW END-ROLL SUPPORT:
A narrower and slimmer end roll support improves stalk feeding when you're not following rows. At the heart of this support is a maintenance free bearing.



TRANSPORT POSITIONING:
Each snout has a simple and sturdy scissor type stand for quick and easy operation.



SNOUTS:
The patented open side design, slim width and stainless steel construction allow stalks to be eased over into the row unit, producing better crop flow to the gathering chains. The easier and increased crop flow reduces ear loss and allows good ground speed to be maintained in different row spacings and extreme conditions such as short stalks, goose-necking & downed corn.



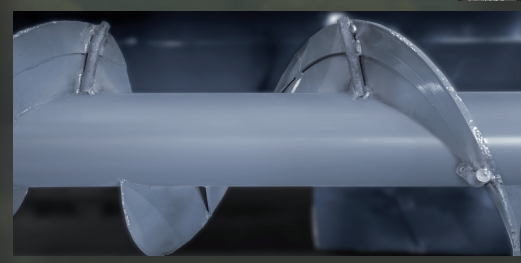
GATHERING CHAINS:
The patented offset sprocket design allows a wider opening for the stalks to enter the gathering chains with ease. The patented gathering chains have an 11 lug design which are timed together, allowing each "pair" of lugs to only have to bring one stalk in at a time. This allows for even feeding to the rollers for maximum efficiency.



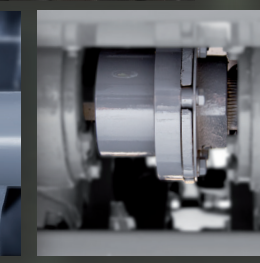
ROW UNIT SKIDS:
The row unit skid plates prevent the gathering chains from digging in the ground reducing the possibility of picking up foreign objects such as rocks. These also contribute to increased header strength.



ROW UNITS DRIVE:
The simple, oil bath roller chain transmission operates with an auto tensioner, providing low maintenance and long operating life.



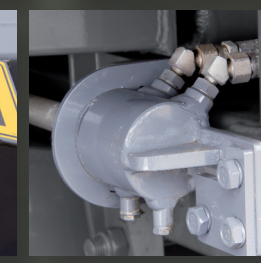
CROSS AUGER REINFORCED FLIGHTING:
The reinforced flighting at the feeder house section provides low maintenance and long operating life.



CLUTCHES:
Maintenance free, non-greaseable row unit clutches.



DECK PLATES:
Hydraulically adjustable deck plates are standard and the indicator clearly shows the plates position to the combine operator.



ADAPTING KITS:
Adaptor kits are available for all major makes and models of combines. These simple kits include the adaptor frame, hydraulic and electrical couplers.